



## It's convenient and effective

In 2012, GCSEPod subscribing schools achieved an average rise in attainment of 2.6% (percentage of students with at least 5 A\*-C grades including English and Maths). That's **3% higher** than the national average. Many subscribing schools achieve a rise of more than 10% year on year.

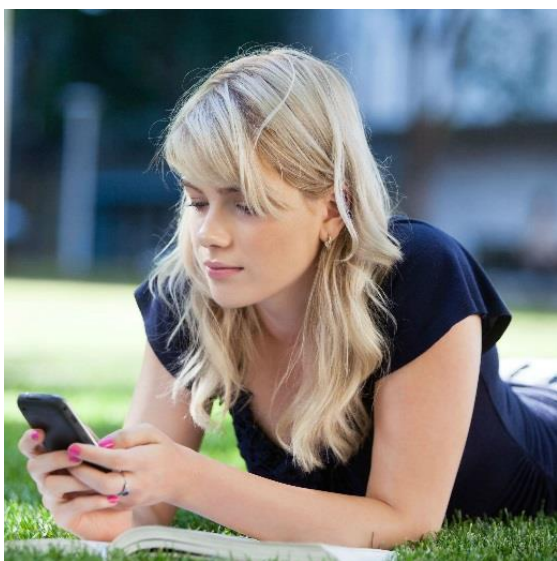
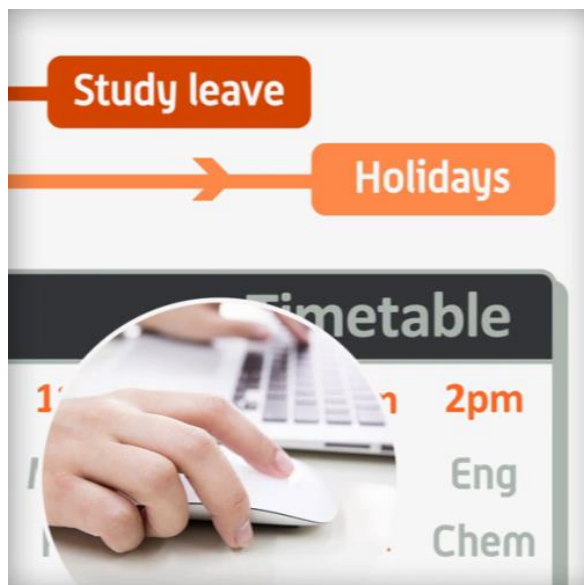
GCSEPod podcasts are **designed for mobile** devices so it's like your students are carrying a huge pile of textbooks and revision guides around with them everywhere. **Filters** also ensure that your students can only view the podcasts relevant to the exam boards you use.

## It will help you organise your students' learning

Create personal podcast playlists to send to students in the run-up to a test or set **homework for them to complete**.

Add extra **resources** to a podcast (quizzes, videos, images, past papers) to support the students further.

**Single sign on** available through your VLE so there is a seamless transition to GCSEPod from your school's online learning environment.



**75% of 16-24 year olds own a smartphone\***

Make use of existing and new mobile technology in your school.

Podcasts can be watched online in school, at home or downloaded to **Apple, Android and BlackBerry** devices.

Students can listen to GCSEPod podcasts anywhere, with nobody knowing that they are working.

**\*(Ofcom 2013)**

Let's keep in touch!



Telephone: **0191 2111 999**  
Email: **support@gcsepod.com**

## What is it?

- One website, one Apple app, over 4,000 audio-visual podcasts
- Content produced specifically for mobile devices, tablets and PCs
- Designed to squeeze exactly the right knowledge you need for exam success into short 3-5 minutes chunks
- Helps you with learning, homework and revision

## How do I get it?

When your school has informed you that you have been registered with GCSEPod, you simply need to activate your account.

- 1) Go to [www.gcsepod.com](http://www.gcsepod.com) and click 'LOGIN'.
- 2) Then click 'NEW HERE? GET STARTED'.
- 3) Tick the box for 'Teacher'.
- 4) Enter your school email address.
- 5) You will receive an email with a password to log in to the site. You can change your password to something more memorable.



## Key Features

### Assignments

Add questions to specific podcasts to test your students' understanding of the subject.

Allocate them to groups of students or target one specific student to support. Results are available as reports to track progress.

### Extras

Attach extra resources to a podcast to give students further knowledge and revision guidance.

Videos, images, past papers, quizzes and web links can be added to enhance learning.

### Groups

Organises your students into different groups and sorts by key data (e.g. amount of usage, number of logins). Compare usage between different groups (e.g. male/female split, SEN students, Pupil Premium) to evaluate impact.

### Reports

Evidence the impact of GCSEPod to OFSTED using the detailed usage reports. Monitor site usage, compare with exam results and print related assignment reports to keep track of student progress.